



中国认可  
国际互认  
检测  
TESTING  
CNAS L5772



# Test Report

Report No.: PTC23122110601C-EN01

Issue Date: Dec. 28, 2023

Page1 of 14

**Applicant:** HANGZHOU ZANUO TECHNOLOGY CO.,LTD  
**Address:** Room 2001,Building 3,No. 1217,Wenyi West Road,Cangqian Street,Yuhang District,  
Hangzhou, ZheJiang, China

The following merchandise was (were) submitted and identified by client as:

**Sample Name:** Network Cameras  
**Model:** Main test model: IPC-B1410C-S2-L9  
Series model: Please refer to next page  
**Manufacturer:** HANGZHOU ZANUO TECHNOLOGY CO.,LTD  
**Address:** Room 2001,Building 3,No. 1217,Wenyi West Road,Cangqian Street,Yuhang  
District, Hangzhou, ZheJiang, China  
**Sample Received Date:** Dec. 22, 2023  
**Completed Date:** Dec. 28, 2023

**Test Requested:** As specified by client, with reference to RoHS Directive 2011/65/EU and its subsequent amendments regulation EU No.2015/863.(Lead (Pb), Cadmium(Cd), Mercury(Hg), Hexavalent Chromium(Cr<sup>6+</sup>), PBBs and PBDEs, Phthalates (DBP, BBP,DEHP,DIBP))

**Conclusion(s):** According to the test results of below test parameters, the tested materials of submitted samples complied with the requirements for RoHS Directive 2011/65/EU and its subsequent amendments regulation EU No.2015/863.

**Test Result(s) and Test Method(s):**Please refer to next page(s).

Prepared by: Anne

Checked by:Crystal

Approved by: Miya



This report is issued according to the general clauses in [www.ptc-testing.com](http://www.ptc-testing.com) by PTC. Responsibility, guarantee and law restriction are defined in the general service clauses. The report is only responsible for the submitted sample(s) except as otherwise noted. The report could not be copied without permission of the company.

**Precise Testing & Certification (Guangdong) Co., Ltd. (PTC)**

Building 1, No. 6, Tongxin Road, Dongcheng Street, Dongguan, Guangdong, China  
Tel: 86-769-38808222 Fax: 86-769-38826111 [http:// www.ptc-testing.com](http://www.ptc-testing.com)



# Test Report

Report No.: PTC23122110601C-EN01

Issue Date: Dec. 28, 2023

Page2 of 14

Series model:

IPC-B1210C-S2-L, IPC-D1210C-S2, IPC-D1210S-S2, IPC-E1210C-S2-L, IPC-B1310C-S2-L,  
IPC-D1310C-S2, IPC-D1310S-S2, IPC-E1310C-S2-L, IPC-B1410C-S2-L, IPC-D1410C-S2, IPC-D1410S-S2,  
IPC-E1410C-S2-L, IPC-B1510C-S2-L, IPC-D1510C-S2, IPC-D1510S-S2, IPC-E1510C-S2-L,  
IPC-B1210C-S3-L, IPC-D1210C-S3, IPC-D1210S-S3, IPC-E1210C-S3-L, IPC-B1310C-S3-L,  
IPC-D1310C-S3, IPC-D1310S-S3, IPC-E1310C-S3-L, IPC-B1410C-S3-L, IPC-D1410C-S3,  
IPC-E1410C-S3-L, IPC-B1510C-S3-L, IPC-D1510C-S3, IPC-D1510S-S3, IPC-E1510C-S3-L,  
IPC-B1210C-S2-L-AS, IPC-D1210C-S2-AS, IPC-E1210C-S2-L-AS, IPC-B1310C-S2-L-AS,  
IPC-D1310C-S2-AS, IPC-E1310C-S2-L-AS, IPC-B1410C-S2-L-AS, IPC-D1410C-S2-AS,  
IPC-E1410C-S2-L-AS, IPC-B1510C-S2-L-AS, IPC-D1510C-S2-AS, IPC-E1510C-S2-L-AS,  
IPC-B1210C-S3-L-AS, IPC-D1210C-S3-AS, IPC-E1210C-S3-L-AS, IPC-B1310C-S3-L-AS,  
IPC-D1310C-S3-AS, IPC-E1310C-S3-L-AS, IPC-B1410C-S3-L-AS, IPC-D1410C-S3-AS,  
IPC-E1410C-S3-L-AS, IPC-B1510C-S3-L-AS, IPC-D1510C-S3-AS, IPC-E1510C-S3-L-AS,  
ZN-IPC-B1210C-S2-L, ZN-IPC-D1210C-S2, ZN-IPC-E1210C-S2-L, ZN-IPC-B1310C-S2-L,  
ZN-IPC-D1310C-S2, ZN-IPC-E1310C-S2-L, ZN-IPC-B1410C-S2-L, ZN-IPC-D1410C-S2,  
ZN-IPC-E1410C-S2-L, ZN-IPC-B1510C-S2-L, ZN-IPC-D1510C-S2, ZN-IPC-E1510C-S2-L,  
ZN-IPC-B1210C-S3-L, ZN-IPC-D1210C-S3, ZN-IPC-E1210C-S3-L, ZN-IPC-B1310C-S3-L,  
ZN-IPC-D1310C-S3, ZN-IPC-E1310C-S3-L, ZN-IPC-B1410C-S3-L, ZN-IPC-D1410C-S3,  
ZN-IPC-E1410C-S3-L, ZN-IPC-B1510C-S3-L, ZN-IPC-D1510C-S3, ZN-IPC-E1510C-S3-L,  
ZN-IPC-B1210C-S2-L-AS, ZN-IPC-D1210C-S2-AS, ZN-IPC-E1210C-S2-L-AS, ZN-IPC-B1310C-S2-L-AS,  
ZN-IPC-D1310C-S2-AS, ZN-IPC-E1310C-S2-L-AS, ZN-IPC-B1410C-S2-L-AS, ZN-IPC-D1410C-S2-AS,  
ZN-IPC-E1410C-S2-L-AS, ZN-IPC-B1510C-S2-L-AS, ZN-IPC-D1510C-S2-AS, ZN-IPC-E1510C-S2-L-AS,  
ZN-IPC-B1210C-S3-L-AS, ZN-IPC-D1210C-S3-AS, ZN-IPC-E1210C-S3-L-AS, ZN-IPC-B1310C-S3-L-AS,  
ZN-IPC-D1310C-S3-AS, ZN-IPC-E1310C-S3-L-AS, ZN-IPC-B1410C-S3-L-AS, ZN-IPC-D1410C-S3-AS,  
ZN-IPC-E1410C-S3-L-AS, ZN-IPC-B1510C-S3-L-AS, ZN-IPC-D1510C-S3-AS, ZN-IPC-E1510C-S3-L-AS,  
IPC-B2210C-S2-L, IPC-D2210C-S2, IPC-D2210S-S2, IPC-E2210C-S2-L, IPC-B2310C-S2-L,  
IPC-D2310C-S2, IPC-D2310S-S2, IPC-E2310C-S2-L, IPC-B2410C-S2-L, IPC-D2410C-S2, IPC-D2410S-S2,  
IPC-E2410C-S2-L, IPC-B2510C-S2-L, IPC-D2510C-S2, IPC-D2510S-S2, IPC-E2510C-S2-L,  
IPC-B2210C-S3-L, IPC-D2210C-S3, IPC-D2210S-S3, IPC-E2210C-S3-L, IPC-B2310C-S3-L,  
IPC-D2310C-S3, IPC-D2310S-S3, IPC-E2310C-S3-L, IPC-B2410C-S3-L, IPC-D2410C-S3,  
IPC-E2410C-S3-L, IPC-B2510C-S3-L, IPC-D2510C-S3, IPC-D2510S-S3, IPC-E2510C-S3-L,  
IPC-B2210C-S2-L-AS, IPC-D2210C-S2-AS, IPC-E2210C-S2-L-AS, IPC-B2310C-S2-L-AS,  
IPC-D2310C-S2-AS, IPC-E2310C-S2-L-AS, IPC-B2410C-S2-L-AS, IPC-D2410C-S2-AS,  
IPC-E2410C-S2-L-AS, IPC-B2510C-S2-L-AS, IPC-D2510C-S2-AS, IPC-E2510C-S2-L-AS,  
IPC-B2210C-S3-L-AS, IPC-D2210C-S3-AS, IPC-E2210C-S3-L-AS, IPC-B2310C-S3-L-AS,

This report is issued according to the general clauses in [www.ptc-testing.com](http://www.ptc-testing.com) by PTC. Responsibility, guarantee and law restriction are defined in the general service clauses. The report is only responsible for the submitted sample(s) except as otherwise noted. The report could not be copied without permission of the company.

**Precise Testing & Certification (Guangdong) Co., Ltd. (PTC)**

Building 1, No. 6, Tongxin Road, Dongcheng Street, Dongguan, Guangdong, China  
Tel: 86-769-38808222 Fax: 86-769-38826111 [http:// www.ptc-testing.com](http://www.ptc-testing.com)



# Test Report

**Report No.:** PTC23122110601C-EN01

**Issue Date:** Dec. 28, 2023

Page3 of 14

IPC-D2310C-S3-AS, IPC-E2310C-S3-L-AS, IPC-B2410C-S3-L-AS, IPC-D2410C-S3-AS,  
IPC-E2410C-S3-L-AS, IPC-B2510C-S3-L-AS, IPC-D2510C-S3-AS, IPC-E2510C-S3-L-AS,  
ZN-IPC-B2210C-S2-L, ZN-IPC-D2210C-S2, ZN-IPC-E2210C-S2-L, ZN-IPC-B2310C-S2-L,  
ZN-IPC-D2310C-S2, ZN-IPC-E2310C-S2-L, ZN-IPC-B2410C-S2-L, ZN-IPC-D2410C-S2,  
ZN-IPC-E2410C-S2-L, ZN-IPC-B2510C-S2-L, ZN-IPC-D2510C-S2, ZN-IPC-E2510C-S2-L,  
ZN-IPC-B2210C-S3-L, ZN-IPC-D2210C-S3, ZN-IPC-E2210C-S3-L, ZN-IPC-B2310C-S3-L,  
ZN-IPC-D2310C-S3, ZN-IPC-E2310C-S3-L, ZN-IPC-B2410C-S3-L, ZN-IPC-D2410C-S3,  
ZN-IPC-E2410C-S3-L, ZN-IPC-B2510C-S3-L, ZN-IPC-D2510C-S3, ZN-IPC-E2510C-S3-L,  
ZN-IPC-B2210C-S2-L-AS, ZN-IPC-D2210C-S2-AS, ZN-IPC-E2210C-S2-L-AS, ZN-IPC-B2310C-S2-L-AS,  
ZN-IPC-D2310C-S2-AS, ZN-IPC-E2310C-S2-L-AS, ZN-IPC-B2410C-S2-L-AS, ZN-IPC-D2410C-S2-AS,  
ZN-IPC-E2410C-S2-L-AS, ZN-IPC-B2510C-S2-L-AS, ZN-IPC-D2510C-S2-AS, ZN-IPC-E2510C-S2-L-AS,  
ZN-IPC-B2210C-S3-L-AS, ZN-IPC-D2210C-S3-AS, ZN-IPC-E2210C-S3-L-AS, ZN-IPC-B2310C-S3-L-AS,  
ZN-IPC-D2310C-S3-AS, ZN-IPC-E2310C-S3-L-AS, ZN-IPC-B2410C-S3-L-AS, ZN-IPC-D2410C-S3-AS,  
ZN-IPC-E2410C-S3-L-AS, ZN-IPC-B2510C-S3-L-AS, ZN-IPC-D2510C-S3-AS, ZN-IPC-E2510C-S3-L-AS

**Test Result(s) and Test Method(s):**Please refer to next page(s).

This report is issued according to the general clauses in [www.ptc-testing.com](http://www.ptc-testing.com) by PTC. Responsibility, guarantee and law restriction are defined in the general service clauses. The report is only responsible for the submitted sample(s) except as otherwise noted.  
The report could not be copied without permission of the company.

**Precise Testing & Certification (Guangdong) Co., Ltd. (PTC)**

Building 1, No. 6, Tongxin Road, Dongcheng Street, Dongguan, Guangdong, China

Tel: 86-769-38808222

Fax: 86-769-38826111

[http:// www.ptc-testing.com](http://www.ptc-testing.com)



# Test Report

Report No.: PTC23122110601C-EN01

Issue Date: Dec. 28, 2023

Page4 of 14

## Test Result(s):

### 1.1) RoHS Directive 2011/65/EU -(Lead (Pb)/Cadmium(Cd)/Mercury(Hg)/Hexavalent Chromium(Cr<sup>6+</sup>)/PBBs/PBDEs)

Test Method: IEC 62321-3-1: 2013, IEC 62321-5: 2013, IEC 62321-6:2015, analyzed by EDXRF & ICP-OES & GC-MS.

No.	Materials Description	EDXRF Result(s) (mg/kg)					Chemical Result (mg/kg)	Conclusion
		Pb	Cd	Hg	Cr	Br		
1	Silver metal with white plating (body shell)	BL	BL	BL	BL	--	--	PASS
2	Silver metal with white plating (casing, bracket)	BL	BL	BL	BL	--	--	PASS
3	White plastic (casing, bracket)	BL	BL	BL	BL	BL	--	PASS
4	White plastic (body base)	BL	BL	BL	BL	BL	--	PASS
5	White plastic (nut, bracket)	BL	BL	BL	BL	BL	--	PASS
6	Silver metal (connecting rod, bracket)	BL	BL	BL	BL	--	--	PASS
7	White plastic (NET-IN plug)	BL	BL	BL	BL	BL	--	PASS
8	Black soft plastic (gasket, data cable)	BL	BL	BL	BL	BL	--	PASS
9	White soft plastic (outside wire jacket, data cable)	BL	BL	BL	BL	BL	--	PASS
10	Beige soft plastic (network plug shell)	BL	BL	BL	BL	BL	--	PASS
11	White plastic (pin fastener, network plug)	BL	BL	BL	BL	BL	--	PASS
12	Gold metal (pin, network plug)	BL	BL	BL	BL	--	--	PASS
13	Silver metal (sleeve, DCD power plug)	BL	BL	BL	BL	--	--	PASS
14 <sup>E</sup>	Silver metal (pin, DC power plug)	IN	BL	BL	BL	--	Pb:22720	PASS
15	Black plastic (pin fastener, DC power plug)	BL	BL	BL	BL	BL	--	PASS
16	White translucent plastic	BL	BL	BL	BL	BL	--	PASS

This report is issued according to the general clauses in [www.ptc-testing.com](http://www.ptc-testing.com) by PTC. Responsibility, guarantee and law restriction are defined in the general service clauses. The report is only responsible for the submitted sample(s) except as otherwise noted. The report could not be copied without permission of the company.

**Precise Testing & Certification (Guangdong) Co., Ltd. (PTC)**

Building 1, No. 6, Tongxin Road, Dongcheng Street, Dongguan, Guangdong, China

Tel: 86-769-38808222

Fax: 86-769-38826111

[http:// www.ptc-testing.com](http://www.ptc-testing.com)



# Test Report

Report No.: PTC23122110601C-EN01

Issue Date: Dec. 28, 2023

Page5 of 14

No.	Materials Description	EDXRF Result(s) (mg/kg)					Chemical Result (mg/kg)	Conclusion
		Pb	Cd	Hg	Cr	Br		
	(internal fixture, DC power plug)							
17	Black foam with adhesive (gasket, body base)	BL	BL	BL	BL	BL	--	PASS
18	Silver metal (wire core, data cable)	BL	BL	BL	BL	--	--	PASS
19	Silver metal with black plating (body shell)	BL	BL	BL	BL	--	--	PASS
20	Silver metal with black plating (screw)	BL	BL	BL	BL	--	--	PASS
21	Silver metal (screw)	BL	BL	BL	BL	--	--	PASS
22	Clear glass (lens panel)	BL	BL	BL	BL	BL	--	PASS
23	Black foam (gasket, lens)	BL	BL	BL	BL	BL	--	PASS
24	Black plastic (lens patch)	BL	BL	BL	BL	BL	--	PASS
25	Black silicone (seal ring)	BL	BL	BL	BL	BL	--	PASS
26	White transparent plastic (LED lens)	BL	BL	BL	BL	BL	--	PASS
27	Silver metal (heat sink)	BL	BL	BL	BL	--	--	PASS
28	White soft plastic (buffer glue)	BL	BL	BL	BL	BL	--	PASS
29	Silver metal with black coating (aluminum substrate)	BL	BL	BL	BL	--	--	PASS
30	Green PCB (PCB "SY56805-PB-V02")	BL	BL	BL	BL	IN	PBBs:N.D. PBDEs:N.D.	PASS

This report is issued according to the general clauses in [www.ptc-testing.com](http://www.ptc-testing.com) by PTC. Responsibility, guarantee and law restriction are defined in the general service clauses. The report is only responsible for the submitted sample(s) except as otherwise noted. The report could not be copied without permission of the company.

**Precise Testing & Certification (Guangdong) Co., Ltd. (PTC)**

Building 1, No. 6, Tongxin Road, Dongcheng Street, Dongguan, Guangdong, China

Tel: 86-769-38808222

Fax: 86-769-38826111

[http:// www.ptc-testing.com](http://www.ptc-testing.com)



# Test Report

Report No.: PTC23122110601C-EN01

Issue Date: Dec. 28, 2023

Page6 of 14

- Note:**
1. mg/kg = milligram per kilogram (ppm).
  2. N.D. = Not Detected
  3. The result are obtained by EDXRF for primary screening, if the result exceeds the below limit (BL), and further chemical testing.
  4. For EDXRF screening, the result(s) of Cr VI was (were) reported as total chromium and the result(s) of PBBs and PBDEs was (were) reported as total bromine.
  5. "E"= This material is tin-lead solder or metal alloy proved by client,lead in tin-lead solder or copper alloy is exempted on the requirements of RoHS directive (EU Directive 2011/65/EU).

## Screening limits in mg/kg for regulated elements in various matrices

Elements	Polymer	Metal	Composite Materials
Pb	$BL \leq (700-3\sigma) < X < (1300+3\sigma) \leq OL$	$BL \leq (700-3\sigma) < X < (1300+3\sigma) \leq OL$	$BL \leq (500-3\sigma) < X < (1500+3\sigma) \leq OL$
Cd	$BL \leq (70-3\sigma) < X < (130+3\sigma) \leq OL$	$BL \leq (70-3\sigma) < X < (130+3\sigma) \leq OL$	$LOD < X < (150+3\sigma) \leq OL$
Hg	$BL \leq (700-3\sigma) < X < (1300+3\sigma) \leq OL$	$BL \leq (700-3\sigma) < X < (1300+3\sigma) \leq OL$	$BL \leq (500-3\sigma) < X < (1500+3\sigma) \leq OL$
Cr	$BL \leq (700-3\sigma) < X$	$BL \leq (700-3\sigma) < X$	$BL \leq (500-3\sigma) < X$
Br	$BL \leq (300-3\sigma) < X$	--	$BL \leq (250-3\sigma) < X$

BL = Below Limit, OL = Over Limit, IN = Inconclusive, LOD = Limit of Detection

This report is issued according to the general clauses in [www.ptc-testing.com](http://www.ptc-testing.com) by PTC. Responsibility, guarantee and law restriction are defined in the general service clauses. The report is only responsible for the submitted sample(s) except as otherwise noted. The report could not be copied without permission of the company.

**Precise Testing & Certification (Guangdong) Co., Ltd. (PTC)**

Building 1, No. 6, Tongxin Road, Dongcheng Street, Dongguan, Guangdong, China

Tel: 86-769-38808222

Fax: 86-769-38826111

[http:// www.ptc-testing.com](http://www.ptc-testing.com)



# Test Report

Report No.: PTC23122110601C-EN01

Issue Date: Dec. 28, 2023

Page7 of 14

## Chemical Testing - Detection Limit & 2011/65/EU Limit:

Name of Chemicals	Method Detection Limit (mg/kg)	2011/65/EU Limit (mg/kg)
Lead (Pb)	5	1000
Cadmium (Cd)	5	100
Mercury (Hg)	5	1000
Chromium VI (Cr VI)	Non-metal: 10 Metal: Negative	Non-metal: 1000 Metal: Negative
Polybromobiphenyls (PBBs) -Bromobiphenyl (MonoBB) -Dibromobiphenyl (DiBB) -Tribromobiphenyl (TriBB) -Tetrabromobiphenyl (TetraBB) -Pentabromobiphenyl (PentaBB) -Hexabromobiphenyl (HexaBB) -Heptabromobiphenyl (HeptaBB) -Octabromobiphenyl (OctaBB) -Nonabromobiphenyl (NonaBB) -Decabromobiphenyl (DecaBB)	Each 5	Sum: 1 000
Polybromodiphenyl ethers (PBDEs) -Bromodiphenyl ether (MonoBDE) -Dibromodiphenyl ether (DiBDE) -Tribromodiphenyl ether (TriBDE) -Tetrabromodiphenyl ether (TetraBDE) -Pentabromodiphenyl ether (PentaBDE) -Hexabromodiphenyl ether (HexaBDE) -Heptabromodiphenyl ether (HeptaBDE) -Octabromodiphenyl ether (OctaBDE) -Nonabromodiphenyl ether (NonaBDE) -Decabromodiphenyl ether (DecaBDE)	Each 5	Sum: 1 000

This report is issued according to the general clauses in [www.ptc-testing.com](http://www.ptc-testing.com) by PTC. Responsibility, guarantee and law restriction are defined in the general service clauses. The report is only responsible for the submitted sample(s) except as otherwise noted. The report could not be copied without permission of the company.

**Precise Testing & Certification (Guangdong) Co., Ltd. (PTC)**

Building 1, No. 6, Tongxin Road, Dongcheng Street, Dongguan, Guangdong, China

Tel: 86-769-38808222

Fax: 86-769-38826111

[http:// www.ptc-testing.com](http://www.ptc-testing.com)



# Test Report

Report No.: PTC23122110601C-EN01

Issue Date: Dec. 28, 2023

Page8 of 14

## Test Result(s):

### 1.2) RoHS Directive 2011/65/EU and its subsequent amendments regulation EU No.2015/863 - (Phthalates DIBP,DBP, BBP, DEHP)

Method: IEC 62321-8: 2017, analyzed by Gas Chromatograph-Mass Spectrometry (GC-MS).

Substances	DBP	BBP	DEHP	DIBP	Conclusion
CAS No.	84-74-2	85-68-7	117-81-7	84-69-5	
Limit(s) (mg/kg)	1000	1000	1000	1000	
MDL (mg/kg)	50	50	50	50	
Material No.	Result (mg/kg)				
3+4+5	98	N.D.	N.D.	N.D.	PASS
7+8+9	126	N.D.	N.D.	N.D.	PASS
10+11+15	79	N.D.	N.D.	N.D.	PASS
16+17+23	110	N.D.	85	N.D.	PASS
24+25+26	67	N.D.	N.D.	N.D.	PASS
28+30	N.D.	N.D.	N.D.	51	PASS
22	N.D.	N.D.	N.D.	N.D.	PASS

- Note:**
1. mg/kg = milligram per kilogram (ppm).
  2. N.D. = Not Detected (< MDL).
  3. MDL = Method Detection Limit.

This report is issued according to the general clauses in [www.ptc-testing.com](http://www.ptc-testing.com) by PTC. Responsibility, guarantee and law restriction are defined in the general service clauses. The report is only responsible for the submitted sample(s) except as otherwise noted. The report could not be copied without permission of the company.

**Precise Testing & Certification (Guangdong) Co., Ltd. (PTC)**

Building 1, No. 6, Tongxin Road, Dongcheng Street, Dongguan, Guangdong, China

Tel: 86-769-38808222

Fax: 86-769-38826111

[http:// www.ptc-testing.com](http://www.ptc-testing.com)



# Test Report

Report No.: PTC23122110601C-EN01

Issue Date: Dec. 28, 2023

Page9 of 14

## Test Material List

The following materials apply only to the samples submitted for phthalates testing.

Material No.	Description (Location)
3	White plastic (casing, bracket)
4	White plastic (body base)
5	White plastic (nut, bracket)
7	White plastic (NET-IN plug)
8	Black soft plastic (gasket, data cable)
9	White soft plastic (outside wire jacket, data cable)
10	Beige soft plastic (network plug shell)
11	White plastic (pin fastener, network plug)
15	Black plastic (pin fastener, DC power plug)
16	White translucent plastic (internal fixture, DC power plug)
17	Black foam with adhesive (gasket, body base)
22	Clear glass (lens panel)
23	Black foam (gasket, lens)
24	Black plastic (lens patch)
25	Black silicone (seal ring)
26	White transparent plastic (LED lens)
28	White soft plastic (buffer glue)
30	Green PCB (PCB "SY56805-PB-V02")

This report is issued according to the general clauses in [www.ptc-testing.com](http://www.ptc-testing.com) by PTC. Responsibility, guarantee and law restriction are defined in the general service clauses. The report is only responsible for the submitted sample(s) except as otherwise noted.  
The report could not be copied without permission of the company.

**Precise Testing & Certification (Guangdong) Co., Ltd. (PTC)**

Building 1, No. 6, Tongxin Road, Dongcheng Street, Dongguan, Guangdong, China

Tel: 86-769-38808222

Fax: 86-769-38826111

[http:// www.ptc-testing.com](http://www.ptc-testing.com)



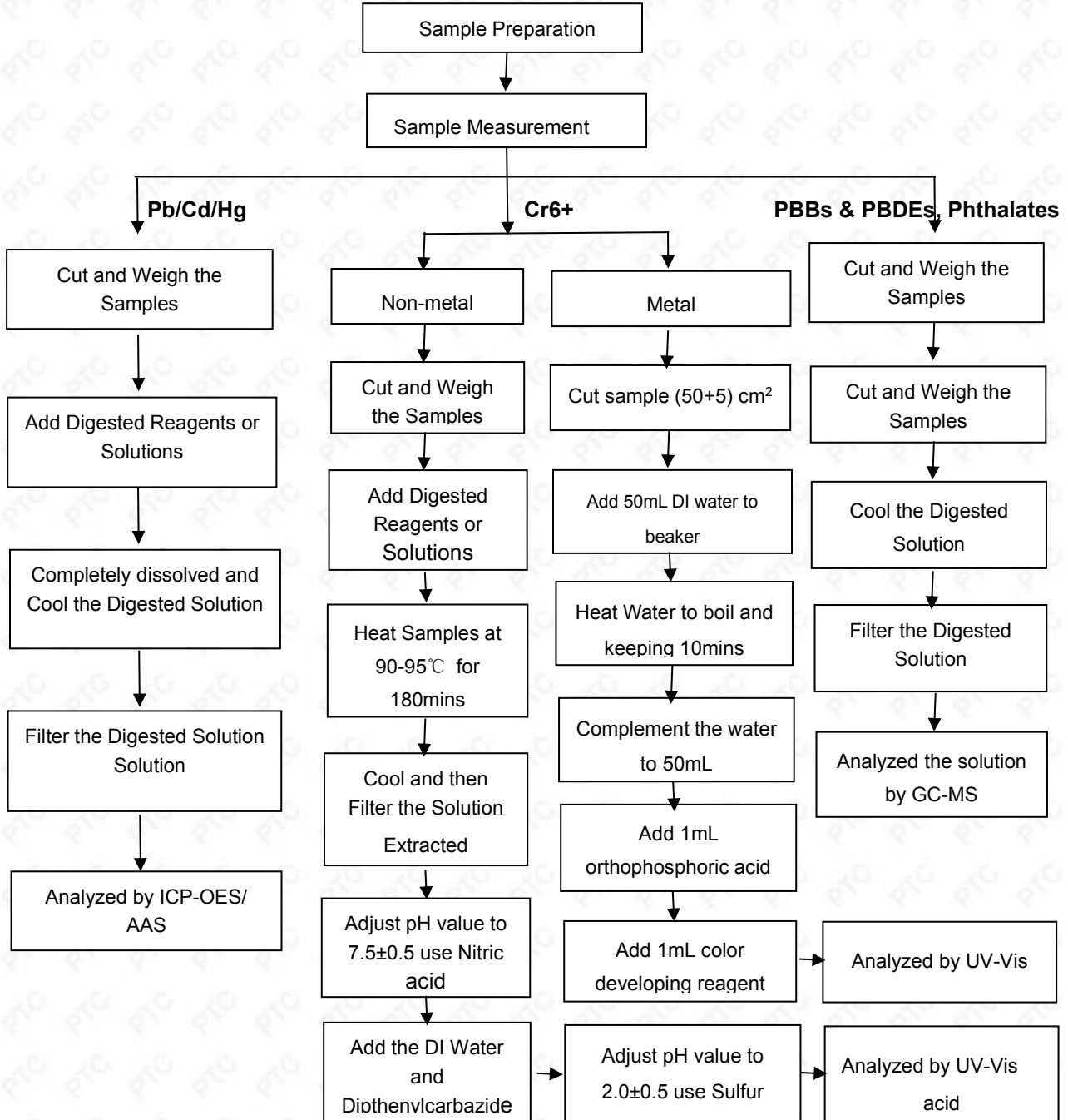
# Test Report

Report No.: PTC23122110601C-EN01

Issue Date: Dec. 28, 2023

Page10 of 14

**Pb/Cd/Hg/Cr6+/PBBs/PBDEs , Phthalates Testing Flow Chart**



This report is issued according to the general clauses in [www.ptc-testing.com](http://www.ptc-testing.com) by PTC. Responsibility, guarantee and law restriction are defined in the general service clauses. The report is only responsible for the submitted sample(s) except as otherwise noted. The report could not be copied without permission of the company.

**Precise Testing & Certification (Guangdong) Co., Ltd. (PTC)**

Building 1, No. 6, Tongxin Road, Dongcheng Street, Dongguan, Guangdong, China

Tel: 86-769-38808222

Fax: 86-769-38826111

[http:// www.ptc-testing.com](http://www.ptc-testing.com)



# Test Report

Report No.: PTC23122110601C-EN01

Issue Date: Dec. 28, 2023

Page11 of 14

Photo(s) of Sample:



This report is issued according to the general clauses in [www.ptc-testing.com](http://www.ptc-testing.com) by PTC. Responsibility, guarantee and law restriction are defined in the general service clauses. The report is only responsible for the submitted sample(s) except as otherwise noted. The report could not be copied without permission of the company.

**Precise Testing & Certification (Guangdong) Co., Ltd. (PTC)**

Building 1, No. 6, Tongxin Road, Dongcheng Street, Dongguan, Guangdong, China

Tel: 86-769-38808222

Fax: 86-769-38826111

[http:// www.ptc-testing.com](http://www.ptc-testing.com)



# Test Report

Report No.: PTC23122110601C-EN01

Issue Date: Dec. 28, 2023

Page 12 of 14



This report is issued according to the general clauses in [www.ptc-testing.com](http://www.ptc-testing.com) by PTC. Responsibility, guarantee and law restriction are defined in the general service clauses. The report is only responsible for the submitted sample(s) except as otherwise noted. The report could not be copied without permission of the company.

**Precise Testing & Certification (Guangdong) Co., Ltd. (PTC)**

Building 1, No. 6, Tongxin Road, Dongcheng Street, Dongguan, Guangdong, China

Tel: 86-769-38808222

Fax: 86-769-38826111

[http:// www.ptc-testing.com](http://www.ptc-testing.com)

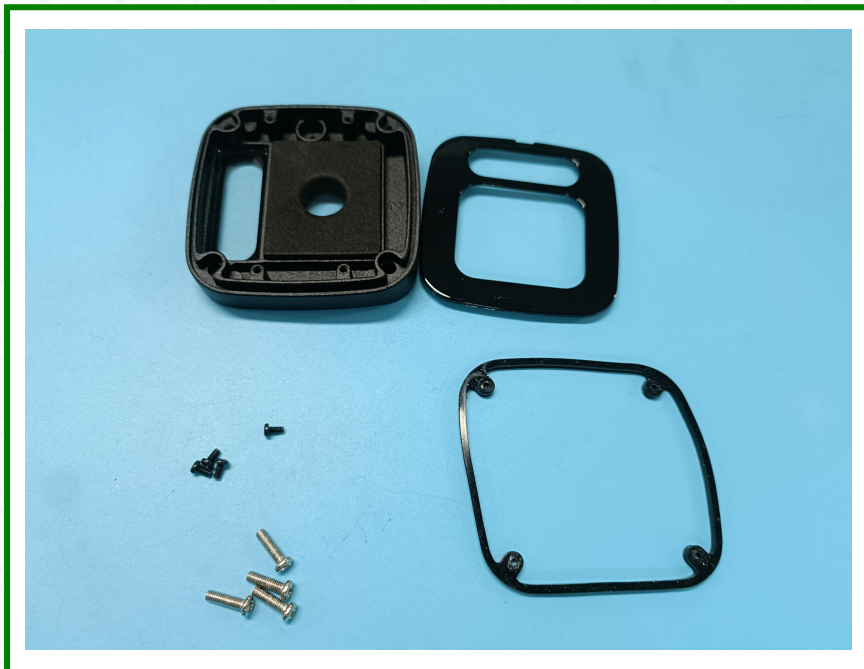
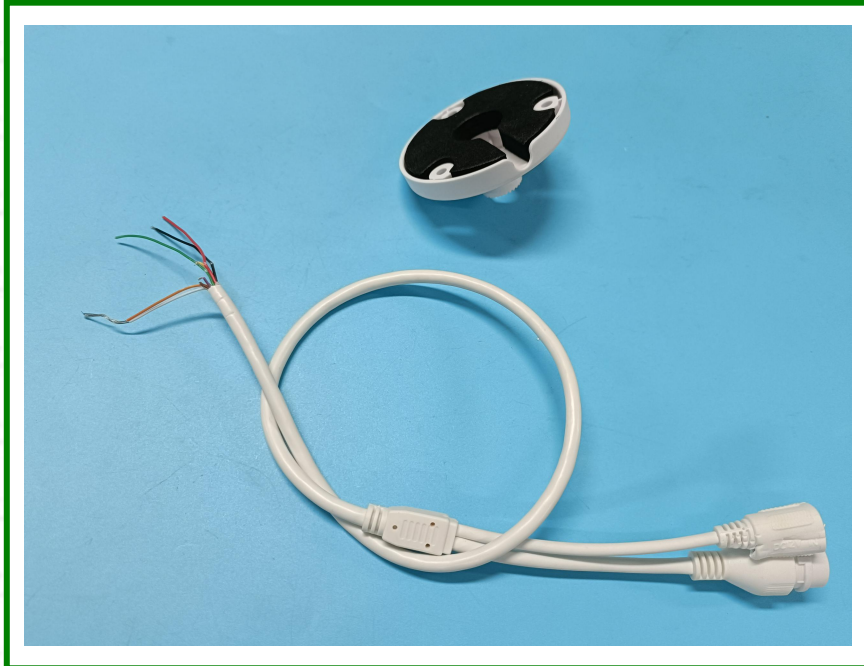


# Test Report

Report No.: PTC23122110601C-EN01

Issue Date: Dec. 28, 2023

Page13 of 14



This report is issued according to the general clauses in [www.ptc-testing.com](http://www.ptc-testing.com) by PTC. Responsibility, guarantee and law restriction are defined in the general service clauses. The report is only responsible for the submitted sample(s) except as otherwise noted. The report could not be copied without permission of the company.

**Precise Testing & Certification (Guangdong) Co., Ltd. (PTC)**

Building 1, No. 6, Tongxin Road, Dongcheng Street, Dongguan, Guangdong, China

Tel: 86-769-38808222

Fax: 86-769-38826111

[http:// www.ptc-testing.com](http://www.ptc-testing.com)

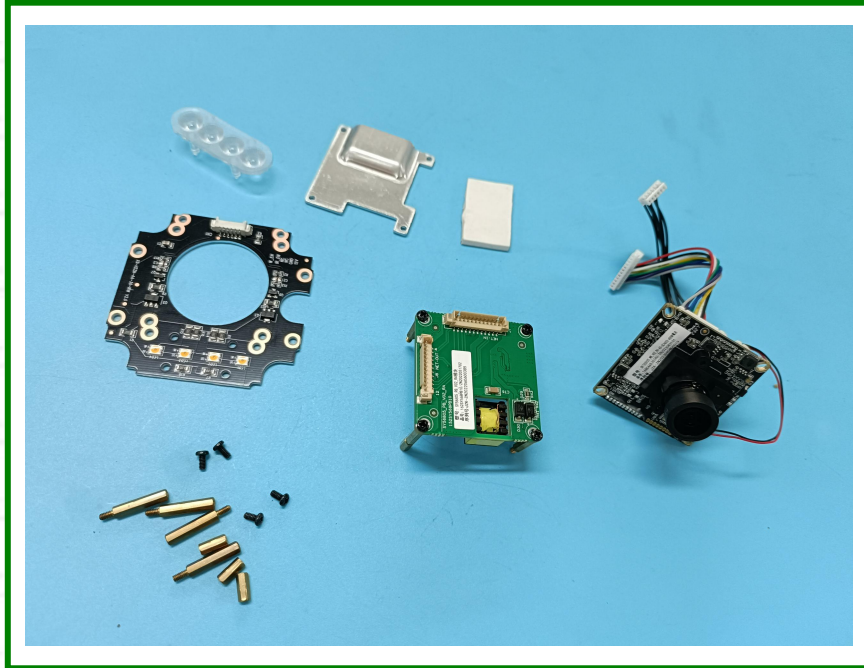


# Test Report

Report No.: PTC23122110601C-EN01

Issue Date: Dec. 28, 2023

Page14 of 14



\*\*\*End of Report\*\*\*

This report is issued according to the general clauses in [www.ptc-testing.com](http://www.ptc-testing.com) by PTC. Responsibility, guarantee and law restriction are defined in the general service clauses. The report is only responsible for the submitted sample(s) except as otherwise noted. The report could not be copied without permission of the company.

**Precise Testing & Certification (Guangdong) Co., Ltd. (PTC)**

Building 1, No. 6, Tongxin Road, Dongcheng Street, Dongguan, Guangdong, China

Tel: 86-769-38808222

Fax: 86-769-38826111

[http:// www.ptc-testing.com](http://www.ptc-testing.com)